



## ***In-Lab / On-Site Calibration***



## Total Calibration Management Single Source for all Calibration Services

- ▶ In-Lab Calibration
- ▶ On-Site Calibration
- ▶ Maintenance & Repair
- ▶ Parts & Consumables
- ▶ BaganTrack™

### In-Lab Calibration Services

Our controlled-environment calibration labs house state-of-the-art equipment and NIST-traceable standards to ensure our customers of the highest quality and most trusted calibration services. Bagan's very broad scope of A2LA accredited calibrations and best uncertainties give us the ability to be your single source for calibration.

### On-Site Calibration Nationwide

Our on-site calibration service provides A2LA accredited field calibrations throughout North America. These on-site field calibrations are designed to be fast and reliable with minimum down time. Bagan employs the most qualified metrology engineers and technicians available in their field of expertise, many of whom have received extensive metrology training exclusive to the U.S. military.

### Maintenance & Repair

Our calibration lab is equipped with an ISO 9001 certified repair and OEM service depot, allowing us to repair and calibrate your test equipment at the same facility. Bagan employs a highly-skilled base of repair technicians to troubleshoot and repair test equipment from many different industries. We are also ISO 9001 certified for on-site repair & preventive maintenance.

### Parts & Consumables

Our customers can log in to our website 24/7 to order from our stock of aftermarket test equipment parts and consumables. We are a distributor of testing instruments, parts and supplies used in the industries we serve, and we can upgrade or refabricate legacy test equipment that is no longer manufacturer supported.

### BaganTrack™

Bagan helps you make the best use of your calibration data for customer audits and assessments. Our customers receive access to their entire list of inspection, measuring and test equipment data through BaganTrack, our 24/7 online customer service. PDF certificates of calibration can be downloaded as required anytime, and items are found fast with BaganTrack's powerful search options.

## In-Lab / On-Site Calibration - A2LA Certificate #1625.01

### Dimensional

Angle  
Depth / Height / Length  
Diameter / Radius  
Flatness  
Gage Blocks  
Level  
Micrometers  
Optical Comparators  
Parallel / Squareness  
Surface Finish (Profilometers)  
Surface Plates  
Test Indicators  
Thread Plugs / Rings / Wires  
Torque Arm Length  
Wire Cloth and Sieves

### Electrical

Alternating Current (AC)  
Capacitance  
Conductivity  
Direct Current (DC)  
High Voltage  
Inductance  
Oscilloscopes  
pH Simulation  
Resistance  
Resistance Temperature (RTD)  
Thermocouples

### Fluid Quantities

Burettes  
Pipettes  
Refractometers  
Viscosity Meters

### Mechanical

Durometers  
Extensometers  
Extrusion Plastometers  
Force  
Hardness Testers  
Mass  
Pressure  
Scales and Balances  
Tachometers  
Torque  
Velocity

### Optical Quantities

Gloss Measurement  
Gloss Meters  
Gloss Tiles

### Rubber & Plastics

Ash Ovens / Muffle Furnaces  
Cutting Dies  
Environmental Test Chambers  
Hardness / Impact / Resilience  
Process Equipment  
Rheometers / Viscometers  
Temperature Controllers  
Thermocouples / RTD's  
Universal and Tensile Testers  
Weight / Density Testers

### Thermodynamics

Humidity  
IR Temperature  
Ovens  
RTD Probes  
Temperature Baths / Drywells  
Thermocouples  
Thermometers

### Time & Frequency

Frequency Measuring Equipment  
Timers / Stopwatches  
Tuning Forks

Visit our website for scope details and uncertainties



Rebound / resilience test equipment calibration and repair



Rheometer / viscometer calibration, maintenance, parts & software



## **Polymer Calibration Lab**

Our polymer calibration lab is dedicated to providing premier calibration service to our customers in plastic and rubber industries. Bagan polymer metrology engineers have designed specialized fixtures and software for calibrating rheometers & viscometers more accurately and with less down time.

We distribute consumables and aftermarket parts for rubber testing equipment and can upgrade or refabricate legacy parts and components including equipment from Monsanto, TechPro, and Alpha Technologies.

## **Accredited Capabilities**

- Ash Ovens / Muffle Furnaces
- Cutting Dies
- Environmental Test Chambers
- Hardness / Impact / Resilience
- Process Controls and Equipment
- Rheometers / Viscometers
- Temperature Controllers
- Thermocouples / RTD Probes
- Universal and Tensile Testers
- Weights / Scales / Density Testers

Density test equipment calibration





Ring gage calibration



Cutting die calibration



## **Bagan Dimensional Lab**

Our world-class dimensional laboratory can calibrate to the most demanding specifications and uncertainty requirements.

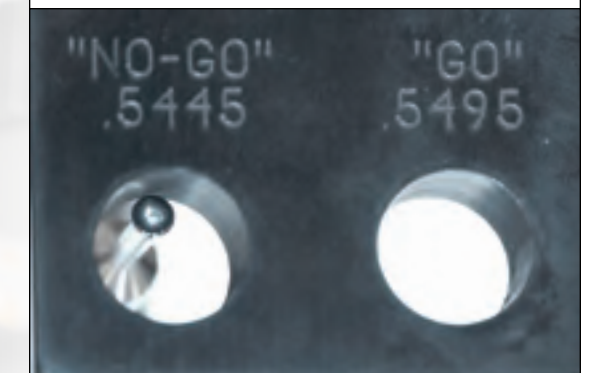
## **Accredited Capabilities**

- Angle
- Depth / Height / Length
- Diameter / Radius
- Flatness
- Gage Blocks
- Level
- Micrometers
- Optical Comparators
- Parallel / Squareness
- Surface Finish / Profilometers
- Surface Plates
- Test Indicators
- Thread Plugs / Rings / Wires
- Torque Arm Length
- Wire Cloth and Sieves

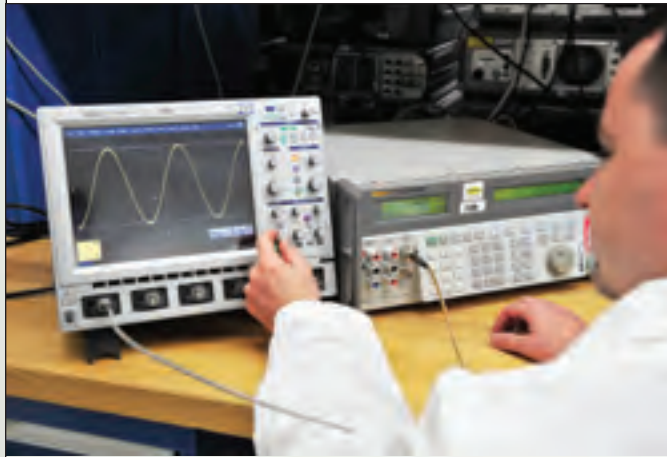
## **Optical Quantities**

- Gloss Measurement
- Gloss Meters
- Gloss Tiles

Custom go / no-go gage calibration



Oscilloscope repair and calibration



High voltage power supply repair and calibration



High frequency measurement and calibration



### Accredited Capabilities

- Alternating Current (AC)
- Capacitance
- Conductivity
- Direct Current (DC)
- Inductance
- Oscilloscope
- pH Simulation
- Resistance
- Voltage / High Voltage

### Chemical Properties

- pH Meter / Probe Calibration
- Conductivity Meter / Probe Calibration

### Time & Frequency

- Frequency Measuring Equipment
- Timers / Stopwatches
- Tuning Forks



Pressure measurement and gauge calibration



Torque measurement and calibration



## Accredited Capabilities

- Crimping Tools
- Durometers
- Extensometers
- Extrusion Plastometers
- Force
- Hardness Testers
- Mass
- Pressure
- Scales and Balances
- Tachometers
- Torque
- Velocity

## Fluid Quantities

- Burettes
- Refractometers
- Viscosity Meters
- Pipettes

Calibration of durometer force and durometer tip dimensions

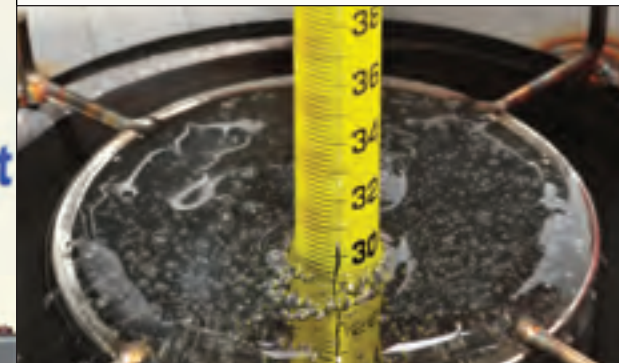


Clamping force and rotor torque calibration

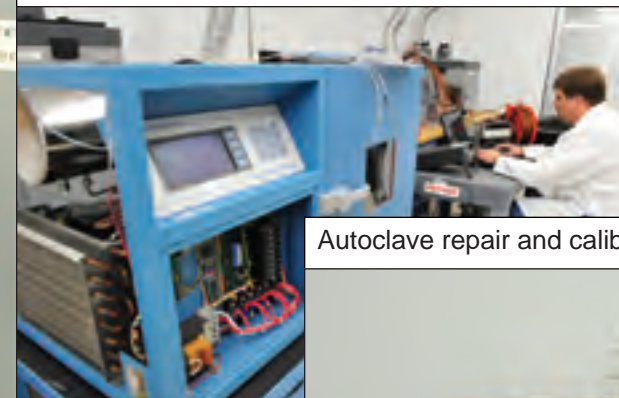




Thermometer and temperature well calibration



Environmental chamber repair and calibration



Autoclave repair and calibration



### **Thermodynamics Lab**

Utilizing the highest quality temperature calibration equipment, our skilled technicians repair and calibrate:

- Cooling and refrigeration equipment
- Data loggers and chart recorders
- Environmental chambers, autoclaves and furnaces
- Heat treating and finishing equipment
- Manufacturing process line temperatures
- Temperature and humidity controllers
- Test equipment with environmental controls

### **Accredited Capabilities**

- Humidity
- IR Temperature
- Ovens
- RTD Probes
- Temperature Baths / Drywells
- Thermocouples
- Thermometers

Quickly find and order replacement parts and consumables using our online store

Aftermarket rheometer parts and upgrades

BaganTrack is a powerful web-based management tool developed by Bagan to provide 24/7 real-time insight into your calibration, preventive maintenance, and repair operations. BaganTrack assists in managing master gage lists, re-ordering consumables, approving repair quotes, reviewing work performed, and meeting quality system requirements. BaganTrack provides you with reconciliation of cost and items associated with services performed for a single facility, or a roll-up for multiple facilities.

Using BaganTrack, our customers can access detailed information for every calibration. Calibration measurement data is recorded in BaganTrack, and our customers can immediately download PDF calibration certificates from anywhere as needed. Additional information for each gage includes: current status, location, special requirements, as-found / as-left data, and calibration due date.

BaganTrack is an exclusive service available only to our customers and partners. Contact us to get started!

Master gage list is searchable and sortable by calibration date, due date, location, current status, and much more

Budgetary reports

Contract PO Spending					
Plant	Budget Amt (\$)	All (\$)	Cal (\$)	Repair (\$)	Other (\$)
Plant 1	12,500				
Invoiced		1,802	1,602	0	0
Done Not Inv'd		0	0	0	0
Open		0	0	0	0
Totals		1,802	1,602	0	0
Plant 2	11,250				
Invoiced		2,613	2,428	185	0
Done Not Inv'd		0	0	0	0
Open		0	0	0	0
Totals		2,613	2,428	185	0
Plant 3	7,500				
Invoiced		5,492	5,492	0	0
Done Not Inv'd		263	263	0	0
Open		0	0	0	0
Totals		5,755	5,755	0	0

Powerful searches

Due / Done / OOT reports

PDF calibration certificates

Contact us to start using BaganTrack!



# Total Calibration Management

## ISO 9001 Certified

Calibration Management  
Repairable Asset Management  
Preventive Maintenance Management



A2LA Accredited  
In-Lab / On-Site Calibration  
ISO/IEC 17025:2005  
Certificate 1625.01



## On-Site Calibration

Bagan's on-site calibration service provides accredited field calibrations throughout the western hemisphere. These on-site calibrations are designed to be fast and reliable with minimum down time.

Many of our field calibration technicians are military trained and continue to receive training in their fields of expertise. We offer preventive maintenance, emergency service, equipment modification, equipment setup and cost-saving, quality-improving ideas for your process.

**To request on-site service call:**  
**Toll-Free: 800.552.5115**  
**Fax: 260.244.4158**

## Laboratory Calibration

Bagan's calibration labs use state-of-the-art equipment and NIST-traceable standards — all controlled to stringent environmental specifications to ensure our customers of the highest quality and most trusted calibrations and certifications.

Our electronics calibration lab is also equipped with a testing and repair area — allowing us to repair and calibrate your electronic equipment in the same place.

**Send repair & calibration items to:**  
**1280 S Williams Dr.**  
**Columbia City, IN 46725**

# [www.rjbgagan.com](http://www.rjbgagan.com)